

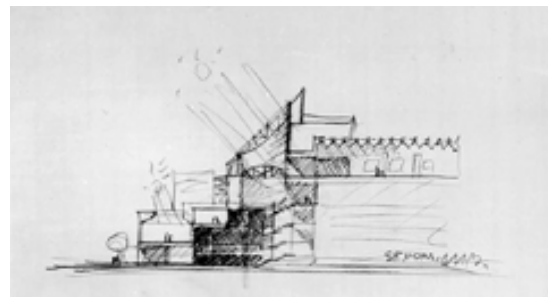
October 24, 2007
Revised February 7, 2008

Contact:

Libby Garrison, 415.357.4177, lgarrison@sfmoma.org
Robyn Wise, 415.357.4172, rwise@sfmoma.org
Sandra Farish Sloan, 415.357.4174, ssloan@sfmoma.org

**SFMOMA EXAMINES THE VERTICAL SECTION IN ARCHITECTURE
WITH THE EXHIBITON *CUT: REVEALING THE SECTION***

From February 8 through June 8, 2008, the San Francisco Museum of Modern Art (SFMOMA) presents *Cut: Revealing the Section*. Featuring a range of works from SFMOMA's architecture and design collection accompanied by complementary artist installations, the exhibition is intended to enrich conceptions of the architectural section, a critical but under-recognized tool for representing spatial adjacencies. The presentation is organized by Henry Urbach, SFMOMA's Helen Hilton Raiser Curator of Architecture and Design.



Mario Botta, *SFMOMA Section of Atrium/Turret*, 1989;
Collection SFMOMA

Comprising a vertical cut through space, the section is among the primary means by which architects and designers visualize, develop, and represent their work. It is a necessary complement to the architectural plan or map view, revealing the third dimension of height, and with it volume, structure, and light. Adjacencies denied by the plan are revealed in the section cut—imagine a cross-section of two individual apartments in a multistory building, one atop the other—helping to illustrate the ways in which noise, heat, water, and even people might move between spaces.

Cut: Revealing the Section offers an opportunity to explore the section through three different media—drawing, sculpture, and film. The exhibition includes some 12 section drawings, ranging from Timothy Pflueger's elaborately detailed depictions of San Francisco's famed Castro Theatre (1921) and Mario Botta's renderings of the SFMOMA building (1989) to more contemporary and abstract works by Joel Sanders and Lewis Tsurumaki Lewis.

Guillotine of Sunlight, Guillotine of Shade (2007), a new sculptural work by Peter Wegner, presents a visceral illustration of the section: a wall made of more than one million sheets of paper slices through the gallery, challenging visitors to think about and move through the space in new ways. Wegner's photographic suite *Buildings Made of Sky* (2004/2007), which upends streetscapes in midtown Manhattan so that the canyons

Cut: Revealing the Section/page 2

between skyscrapers become azure architectural forms, similarly toys with the viewer's perspective to put a fresh spin on the familiar. Lebbeus Woods's sculpture *Nine Reconstructed Boxes* (1999) uses elaborate and intricate cuts to create complex spaces within simple structures.

The presentation also showcases Gordon Matta-Clark's groundbreaking film *Splitting* (1974), perhaps the ultimate realization of the section cut as an act of anti-architecture.

* * *

Museum hours: Open daily (except Wednesdays): 11 a.m. to 5:45 p.m.; open late Thursdays, until 8:45 p.m. Summer hours (Memorial Day to Labor Day): Open at 10 a.m. Closed Wednesdays and the following public holidays: New Year's Day, Fourth of July, Thanksgiving, Christmas. The museum is open the Wednesday between Christmas and New Year's Day.

Koret Visitor Education Center: Open daily (except Wednesdays): 11 a.m. to 5:30 p.m.; open late Thursdays, until 8:30 p.m. Summer hours: Open at 10 a.m.

Admission prices: Adults \$12.50; seniors \$8; students \$7. SFMOMA members and children 12 and under are admitted free. Thursday evenings after 6 p.m. admission is half-price. The first Tuesday of each month admission is free.

SFMOMA is easily accessible by Muni, BART, Golden Gate Transit, SamTrans, and Caltrain. Hourly, daily, and monthly parking is available at the SFMOMA Garage at 147 Minna Street. For parking information, call 415.348.0971.

Visit our website at www.sfmoma.org or call 415.357.4000 for more information.

The San Francisco Museum of Modern Art is supported by a broad array of contributors who are committed to helping advance its mission as a dynamic center for modern and contemporary art. Major annual support is provided by Koret Foundation Funds, the Evelyn and Walter Haas Jr. Fund, and Grants for the Arts/San Francisco Hotel Tax Fund. KidstART free admission for children 12 and under is made possible by Charles Schwab & Co. Inc. Thursday evening half-price admission is sponsored by Banana Republic.

#